
Company Profile

**Water Care
(Nepal) Pvt. Ltd**

EST. 2006

Water Care (Nepal) Pvt. Ltd.

Gwarko, Ringroad, Lalitpur
Nepal

Tel: +977 1 5201079

Fax: + 977 1 5201079

E-mail: karna.watercare@gmail.com

Website: www.watercarenepal.com.np

Introduction

We would like to introduce ourselves as an engineering & trading company involved in import, trading, engineering, designing, installations and turn key projects. Our product range includes, Water Treatment Systems, Waste Water Treatment Systems, Effluent Water Treatment Systems, Ultra Filtration System, Water Pumps, High pressure Pumps, Water Treatment Chemicals, Dosing Pumps, Resin, Water Filter Medias, Mineral water plants Equipment, Spare Parts.

About Our Company:

Established in 2006. The Director of this company has 20 years of experience in this field. Our Successful installation of water treatment plant in Nepal exceed more than 100. We are authorized dealer of **TRANS ORGANICS INDIA PVT. LTD.** We deal with the stock, sales, deals, sign, representation, discussion, negotiation and providing services of Trans Organic products for the country of Nepal.

We also are the authorized dealer of **THERMAX INDIA LTD.** (Sector OEM Resin and ROC). Our services include stockist of Thermax Resin, chemicals, filter media and spare parts.

We are using latest technologies with water professionals. This is import oriented company, assembled in our own work shop. We do design, engineering, installation and servicing of water treatment plants and Waste water treatment plants. Also, supply with erection, commissioning on turnkey basis.

Product Portfolio:

- Dual media Filter / Side Stream Filter
- Iron Removal Filter
- Dual Media Filter
- Multi Grade Filter
- Water Softener
- De - Mineralizing plant
- Ammonia Removal Plant
- Reverse Osmosis Plant
- Ultra-Filtration
- Mixes Bed Unit
- Mineral water plant
- Effluent Treatment
- Sewage Treatment

Why Water Care:

- Supply with erection and commissioning
- After sales service
- Process know- how water audit
- Design and detail engineering
- Operation and maintenance contract turnkey project
- Re-habilitation and modernization of plant
- Training and awareness program

Spare parts:

We have bulk stocks of various spares required for water treatment plants.

Why we had grown:

- Quality and reliability are our main moto.
- Our product is technically upgraded for efficient functioning.
- Environmental conservation is our priority.

Companies:

We are associated with the following companies:

1. BAJRANG IMPEX PVT. LTD.
Bajrang Impex Private Limited is known as one of the prominent traders and importers Water Purifiers and Spare Parts.
2. THERMAX LIMITED (INDIA):
Thermax Limited, an engineering company involved in energy and environment.
3. TRANS ORGANICS (INDIA) PVT. LTD.
Trans Organics (India) Pvt. Ltd is a total environmental engineering company providing complete water treatment solutions.

Manpower:

We have trained and experienced engineers and technician to cater all kinds of customer needs.

Managing Director	-	1
Finance Head	-	1
Technical	-	6
Sales	-	2
Office Support& Logistics	-	3

Infrastructure:

We have a office covering approx. 500 sq.Ft. With all the modern amenities at Ring road Gwarko, Lalitpur.

We have our stock point at Gwarko, Lalitpur, Nepal.

Network:

We have our network with technical person almost all over Nepal to carry out the services effectively. We cover every part of Nepal.

Detailed Product Portfolio:

1. Reverse Osmosis Plant (RO):

A reverse osmosis plant is a manufacturing plant where the process of reverse osmosis takes place. Reverse osmosis is a common process to purify or desalinate contaminated water by forcing water through a membrane. Water produced by reverse osmosis may be used for a variety of purposes, including desalination, wastewater treatment, concentration of contaminants, and the reclamation of dissolved minerals. The image below is an industrial RO with a range varying from 500lph to 50,000lph. We provide the plant in any range required.



We also provide RO with lower capacity for commercial and residential purposes which ranges from [50lph to 500lph](#). Major Products Related to residential and commercial water filtration system with RO of various capacities.



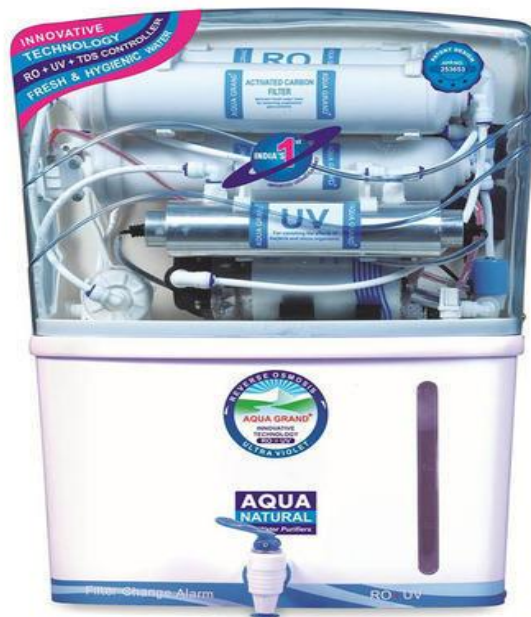
(50 lph (litres per hour RO))



25 lph(litres per hour)



100 lph(litres per hour)



10 lph (litres per hour)

These products can also be provided in European brands as per the clients demands. (Prices may differ)

2. Dual Media Filter (DMF):

Dual Media Filter primarily used to Filter out Turbidity in the raw up to level of 50 NTU. It consists of of sand and Anthracite as Filtering Medium, Anthracite having higher dirt holding capacity is used for removing turbidity.



3. Activated Carbon Filter (ACF):

Activated carbon Filters consists of charcoal which is used as a media for removal of Free Residual Chlorine, Colour, Odor and Oil in small quantity.



4. Pressure Sand Filter (PSF):

Fine mesh sand along with gravel of different sizes are used as the filtering Media. It is used to filter out turbidity from Raw Water up to level of 25 NTU.



5. Iron Removal Filter (IRF):

Iron Removal Filter consists of Manganese Dioxide layer which works as a catalyst for converting Iron present in water as Ferrous to Ferric ion which can be easily precipitated & filtered physically. Iron removal Filter is used for removing Dissolved Iron from water.



6. De-mineralization plant (DM):

Demineralization (DM) Water Treatment Plants. Demineralization is the process of removing mineral salts from Water by using the ion exchange process. Demineralized Water is Water completely free (or almost) of dissolved minerals as a result of one of the following processes.



Our Products and Accessories for different Water Treatment Plants:

1. Pre-treatment Chemicals:

- a. Poly electrolyte chemical (PAC)
- b. Alum (Ferric sulphate)
- c. Sodium Hypo chlorite (NaOCl)
- d. Sodium Hydroxide (NaOH)
- e. Potash
- f. Potassium Permanganate

2. Particulars for Pre-treatment plant:

(Media for Filtration System)

- a. Charged Sand (Filter Sand)
- b. Gravels and Pebbles
- c. Anthracite
- d. Manganese dioxide (MnO₂)
- e. Activated Carbon
- f. Silex

(Equipment and vessels for the Filtration System)

- a. Fiber Reinforced Plastic Vessel (FRP)
- b. MSEP Vessels
- c. Multiport valves
- d. Pumps
- e. Chemical dosing pumps
- f. Air blower / Compressor
- g. Air releasing valves

3. De-mineralization Chemicals (DM plant)

- a. Cation Resin
- b. Anion Resin
- c. Organic Scavenger Resin
- d. Resin for Mixed Bed

4. Accessories for Reverse Osmosis (RO) system

- a. RO membrane
- b. High Pressure pumps
- c. Pressure Tube
- d. Control Panel
- e. Flow Meter
- f. Rote Meter
- g. Conductivity Meter
- h. Pressure Meter
- i. PH Meter
- j. TDS Meter
- k. Hardness Test Kit
- l. Chlorine Test Kit
- m. Pipe Fittings etc.

5. Microbial Treatment Equipment:

- a. Ultra violet disinfection system (U.V System)
- b. Ozonation System
- c. Chlorination System

Major Projects:

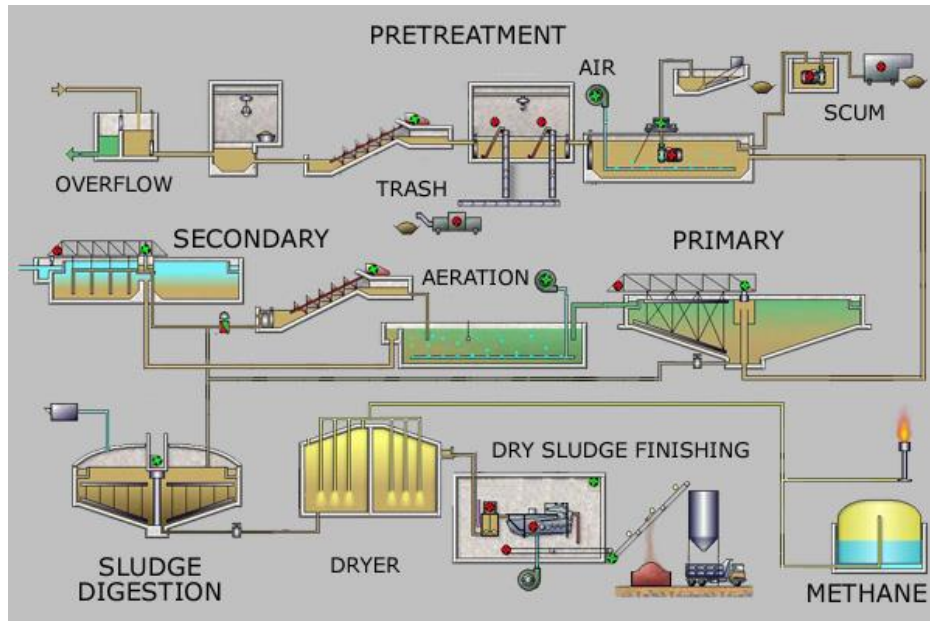
1. The Subproject of Reconstruction of Paropkar Maternity and Women's Hospital and Reconstruction of Bir Hospital

The project was conducted by **HAZAMA ANDO CORPORATION** where the Water treatment plants were fabricated and installed by Water Care (Nepal) Pvt. Ltd. A certification of quality work was provided by the company MEP Chief. The Water Treatment Plant placed at both sites were Reverse Osmosis (RO) plant of capacity $2 \text{ m}^3/\text{hr.}$ at Bir Hospital and $6 \text{ m}^3/\text{hr.}$ at Paropkar Maternity and Women's Hospital.



2. Sewage Treatment Plant at CG Landmark (Hotel Chitwan):

A sewage treatment plant of capacity 75 KLD (kiloliter per day) was set up at Hotel Chitwan by Water Care (Nepal) Pvt. Ltd. The quality assurance and maintenance of the plant is done by us.



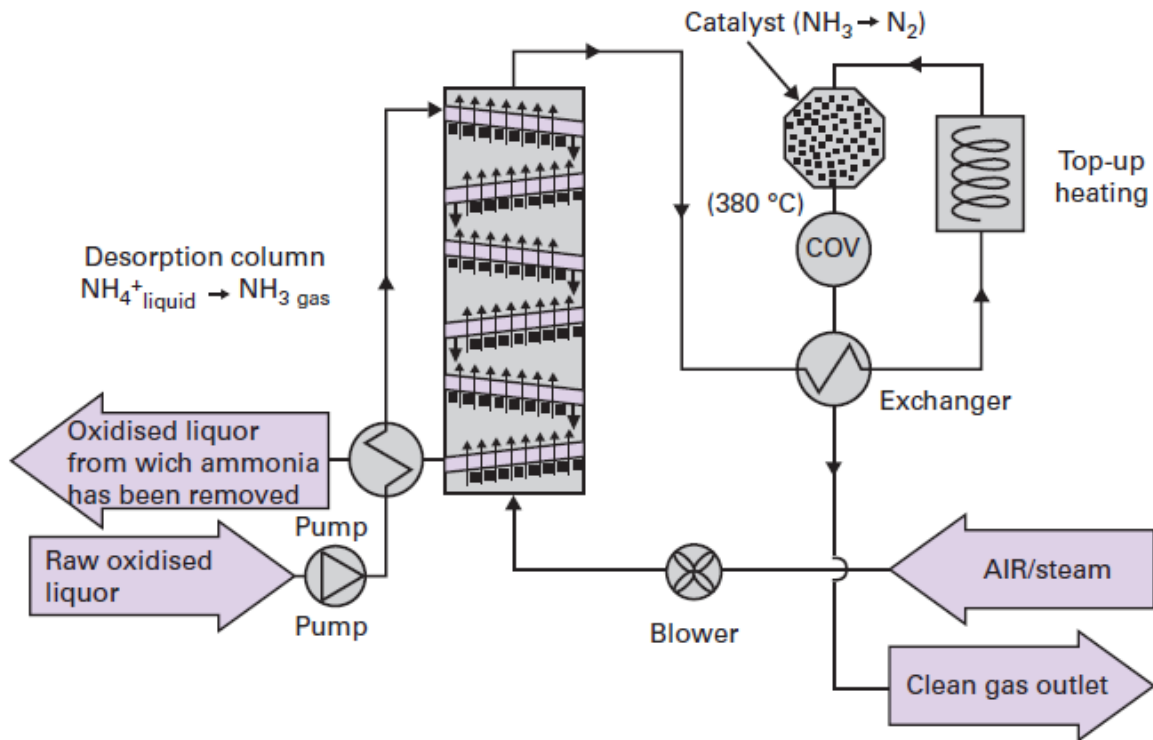
3. Effluent Treatment Plant at Curex Pharmaceuticals:

An Effluent Treatment Plant of capacity 50 KLD (kiloliter per day) was set up at Curex Pharmaceuticals by Water Care (Nepal) Pvt. Ltd. The proper inspection of the plant was done thoroughly and the maintenance is handled by us.



4. Ammonia Removal Plant at Downtown Apartments:

Ammonia Removal Plant was set up at Downtown Apartments, Lalitpur. It was of capacity $10 \text{ m}^3/\text{s}$. The fabrication, installation and maintenance is handled by Water Care (Nepal) Pvt. Ltd.



GALLERY



FRP Vessels



Multi Port Valve



Membrane Housing



Pressure Gauge



High Pressure Pump



Filter Cartridge



Housing



Dosing Pump



Resin



Birm



Anthracite



Garnet

Above images shown are some equipment, media and accessories used in Water Treatment Plants like RO plant, DM plant, IRF plant, DMF plant etc.]